

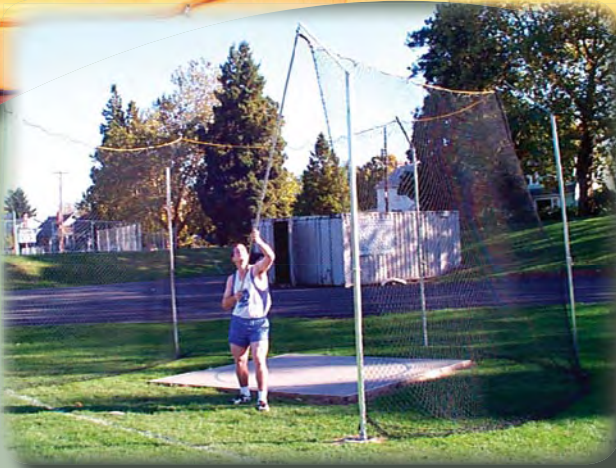
# SPORTS-FAB

QUALITY SPORTS EQUIPMENT

**SPORTS-FAB**



**QUALITY SPORTS EQUIPMENT**



Soccer - Track & Field





Sports-Fab is a familiar name in the sports equipment business. We purchased the assets of the Leflar Corporation, a name familiar to most of you. Sports-Fab and Leflar equipment are the result of years of production experience and we continue to manufacture many of the same items made by Leflar. Please refer to this catalogue for replacement parts of Leflar products.

When you make a purchase at Sports-Fab, you are buying long-term durability as well as superior quality. We use only the highest quality materials and take pride in our high level of workmanship. We continually strive to improve our product line in response to your athletic needs!

Our goal is to provide you with top-quality equipment, delivered promptly and priced right. Call our toll-free number anytime for information or to place an order. Thank you!

**DISCLAIMER:** Every attempt is made to ensure the highest degree of protection and performance from all Sports-Fab athletic equipment. However, we cannot guarantee freedom from injury. The user assumes all risk of injury relative to its use. Sports-Fab assumes no liability for improper use, maintenance, or assembly negligence. Notwithstanding anything to the contrary contained herein, Sports-Fab shall have no liability, whether arising in contract, tort, or otherwise, for any loss of profit or use, property damage, or any indirect, special, incidental or consequential charges. Every product is sold with this condition, and representatives of Sports-Fab may not waive or change it. The purchaser hereby agrees to indemnify and hold Sports-Fab harmless from any claims or damages arising out of the use of the products by third parties. This provision includes, but is not limited to, purchaser's agreement that it will, in the event a claim is made, stand in the place of Sports-Fab in investigating, responding to and defending against the claim and will pay all damages, costs, and attorney fees associated with defending against the claim.

## PRODUCT INDEX

HURDLES.....	2
STARTING BLOCKS.....	3
HIGH JUMP STANDARDS.....	4
POLE VAULT STANDARDS.....	5
POLE VAULT & HIGH JUMP PITS.....	6
DISCUS CAGE.....	7
HURDLE CARTS.....	8
EQUIPMENT CARTS.....	9
FIELD WAGON/PIT WAGON.....	10
STANDS/LAP BELL.....	11
LANE GATE/IMPLEMENTS.....	12
VIDEO TIMING SYSTEMS.....	13, 14
BLEACHERS/BENCHES.....	15
PORTABLE OFFICIAL SOCCER GOAL.....	16, 17
DELUXE SOCCER GOAL/NETS, FLAGS, BALLS.....	18
REBOUND TRAINER/FOLDUP GOALS.....	19
REPLACEMENT PARTS - TRACK & FIELD.....	20

*Track & Field*

Visit Us On The  
Web At  
[www.sports-fab.com](http://www.sports-fab.com)

*Bleachers*

*Soccer*

*Parts*



# TRACK & FIELD - HURDLES



Our hurdles are the former Leflar design, used by thousands of schools for over thirty years. They are all-steel construction, **zinc-plated** for long life and good appearance.

Hurdle tops are long lasting PVC-vinyl material. Special screening with your school name and logo is available. Exclusive steel spring locks make for easy height change.

## ITO INTERNATIONAL TYPE OFFICIAL

Meets all IAAF, NCAA, AAU and USATF rulings. Five heights and three position counterweight are firmly set with fingertip pressure and adjust for all official men's and women's events. New, improved rigid "L" design is extra strong and stacks compactly.

## HSO HIGH SCHOOL OFFICIAL

Base is sturdy welded steel with two metal cross members. Official high school tip-over weight and height adjustments at 30", 33", 36", 39" and 42".

**Our Best Seller!**



## OHO OPEN HIGH SCHOOL OFFICIAL

Base is sturdy welded steel with official high school tip-over weight at heights of 30", 33", 36", 39" and 42".

Hurdle features an open approach to the hurdle with no bottom cross bar on the hurdler's approach side. Similar to the "L" design of the ITO.

## STH SENIOR TRAINING HURDLE

Same as the JTH, except has adjustment of 30", 33", 36", 39" and 42".



## JTH-N JUNIOR TRAINING HURDLE

Has height adjustments of 22", 24", 26", 28" and 30". Very light tip-over weight makes this an excellent hurdle for junior programs.

- JTH-P PVC crossbar, regular risers
- JTH-N nylon cross-bar, round end risers
- JTH-B both PVC and nylon crossbars

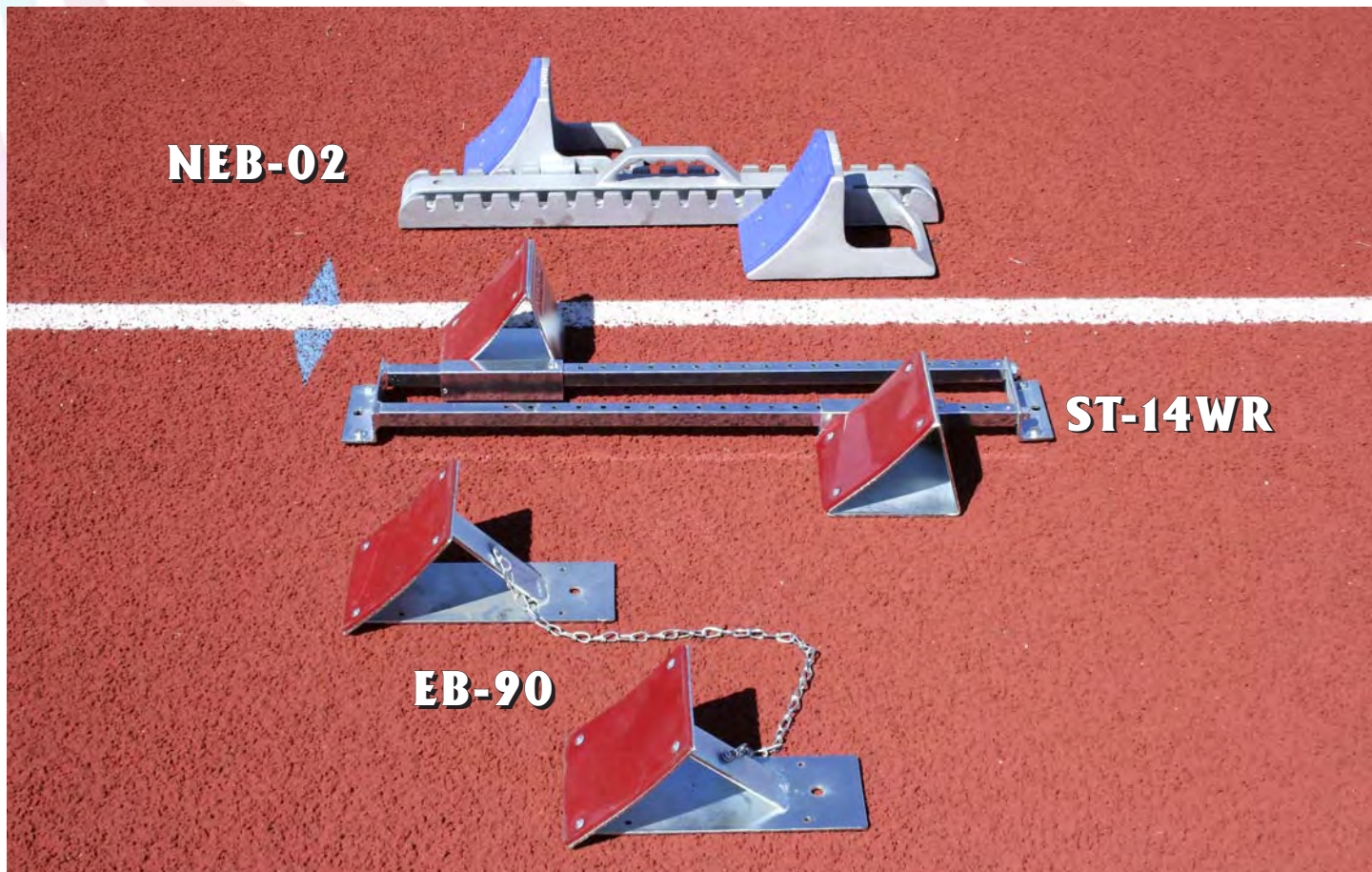
## TCK TRAINING CONVERSION KIT

Not shown. Consists of two round end risers and nylon fly-off crossbar. Kit allows conversion of regular hurdle to a training hurdle.

- TCK-S fits ITO, HSO and HSB hurdles
- TCK-J fits JTH hurdles



# TRACK & FIELD - STARTING BLOCKS



**NEB-02**

**ST-14WR**

**EB-90**

## **NEB-02 NEWTON ELITE BLOCK**

Top quality block meets the needs and budgets of all schools and athletes, and offers the following features:

High quality ALL ALUMINUM construction. An easy carry handle ensures you will not lose pedals during transportation and that pedals will lock firmly into place when placed on the track surface. High quality aluminum pedal has inserts on bottom of pedals for easy spike changes on different track surfaces. Comes with two 6" spikes for dirt tracks and all-weather track spikes.

## **ST-14WR ALL PURPOSE STARTING BLOCK Best Seller!**

Extra wide, 5" curved footrests with 4½" lateral spacing between blocks make this model ideal for both medium and wide stance sprinters. Strong, welded steel construction with bright zinc plating. Tough urethane red rubber face plates, glued and riveted in place. New design guideway makes for easy, fast and positive adjustment without loosening or tightening any fasteners. All-weather track spikes included.

## **EB-90 ECONOMY STARTING BLOCK Great Value!**

Uses the same curved footrests and pads as the ST-14W. Each footrest has a long (10") flat base with four spikes. Each pair is connected together with a chain which allows runner to adjust to any length or width. They are light to carry (6½ lbs), easy to store and economical to buy. Can be used on any track surface and at all levels of competition



# TRACK & FIELD - HIGH JUMP STANDARDS

All High Jump Standards are made of heavy, steel tubing and all critical parts are **zinc plated**. Easy to read scales are calibrated in both inches and centimeters. Exclusive interlock design prevents loss of parts. High Jump standards are easy to assemble, easy to move and simple to store. All standards will ship UPS.

TRACK & FIELD



## **J6** **ECONOMY STANDARD**

Inexpensive, sturdy and easy to use. Adjusts from 6 inches to 6 feet. Easy to read numbers and official cross bar support. Supplied with heavy flat base.

## **J8X** **DELUXE OFFICIAL STANDARD** **Best Seller!**

Height adjustment from 2' to 8'. Meets all specifications for every level of competition. Supplied with new heavy flat base with transporter.

## **J8XO** **DELUXE OFFICIAL HIGH JUMP STANDARD**

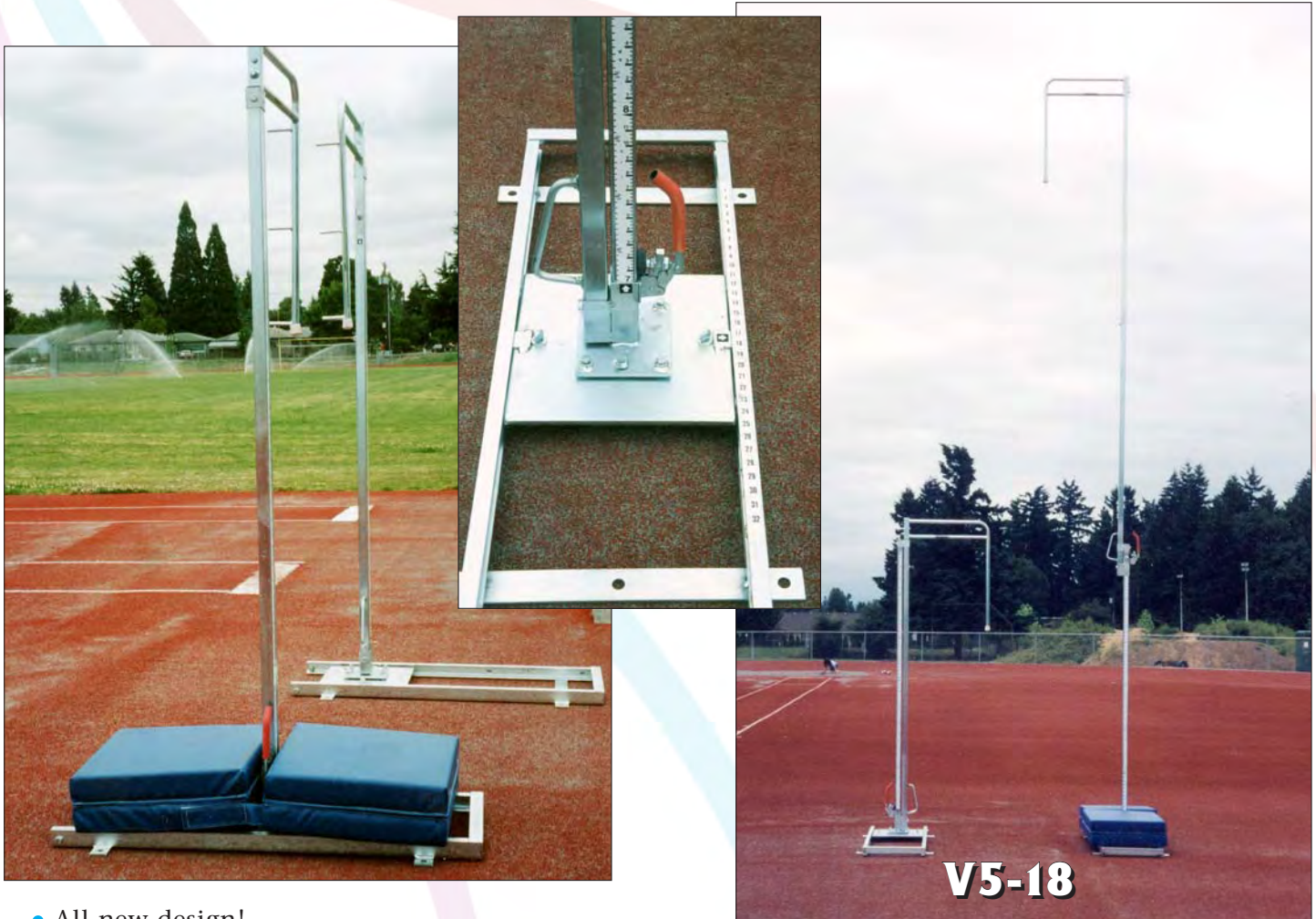
Like the J8X with an over center clamp added.



# TRACK & FIELD - POLE VAULT STANDARDS

## V5-18 POLE VAULT STANDARD

The new V5-18 Pole Vault Standard is the best standard available on the market today. The many easy to use features and reasonable cost makes the V5-18 Pole Vault Standard a must for any track and field program.



- All new design!
- Telescopic action allows adjustment from 5' to 18' without extensions
- Lowered position is only 7' high for easy storage and handling
- New Over-Center clamp replaces old screw knob for easier operation
- New "D" handles for easy lifting of the slide
- New ORU (off-set riser) is lighter and has a rounded top for safety and easy visibility
- Easier to read height scale on both sides of the guideway
- Always at eye level; no more eye strain to read at higher levels
- New guideway baseplate; easy to remove from the main base slide with two thumbscrews
- Has four leveling screws to maintain perfect vertical at all times
- Redesigned one-piece main base - ball bearing slides with easy-to-use brakes and easy-to-read numbers
- Zinc plated for long life

## PVP POLE VAULT SAFETY PADS

Specially designed folding pads for V5-18 Standards. Can also be used on other standards. Pads slide with standards—read numbers easily without removing pads. Folding features makes it easy to adjust length from 40" to 60" to 80". Pads are 4" thick - 18oz. heavy-duty vinyl. Stock colors — Red, Blue, Black, Green.



# TRACK & FIELD - VAULT & HIGH JUMP PITS

ELITE LANDING PITS ARE BACKED BY A LIMITED FIVE-YEAR WARRANTY ON ALL WORKMANSHIP AND MATERIALS

## ALL PITS ARE CONSTRUCTED WITH

- UV Resistant 18oz. Coated Vinyl
- UV Resistant Vinyl Coated Polyester Mesh
- Three Layers of Prime Polyurethane Foam
- Heavy-Duty Rust Resistant Snaps, D-Rings and Buckles
- Square Vinyl Patches Cover The Ends of All Handles And Buckle Strap Webbing
- Vinyl Covered Webbing For The Handles
- D-Rings Around Top & Bottom of Units
- #10 Nylon Zipper Chain
- #138 Polyester Thread
- All Handles, Buckles and Straps Are Reinforced With A Vinyl Backing Material
- All Stress Areas Are Also Reinforced And Quad Stitched

## ELITE HIGH JUMP PITS

**BEST PRICES IN THE MARKET! CALL FOR PRICING**

The HJ ELITE OLYMPIC has cut outs for standard placement to provide additional protection directly under the crossbar. All weather covers are made with the same 18 oz. coated vinyl as our pits. The cover fits snugly over the pit and attaches at the base of the pit. The seams are heat welded to keep moisture out. The unique three layer foam construction offers the same smooth controlled landing on our high jump pits as it does on our pole vault pits.



PITS AVAILABLE IN 26" TO 32" THICKNESS

HJ ELITE OLYMPIC	HJ ELITE 181028	HJ ELITE 16926	HJ ELITE 16824
Overall Size 22' x 11' x 30"	Overall Size 18' x 10' x 28"	Overall Size 16'6" x 9' x 26"	Overall Size 16'6" x 8' x 24"
2 Inside Units 5'6" x 11' x 28"	3 Base Units 6' x 10' x 26"	3 Base Units 5'6" x 9' x 24"	3 Base Units 5'6" x 8' x 22"
2 Outside Units 5'6" x 10' x 28"	1 Top Foam Pad 18' x 10' x 2"	1 Top Foam Pad 16'6" x 9' x 2"	1 Top Foam Pad 16'6" x 8' x 2"
1 Top Foam Pad 22' x 11' x 2"	WEATHER COVER	WEATHER COVER	WEATHER COVER

## ELITE POLE VAULT PITS

All PV ELITE pits extend 16'6" from the back of the box to the back of the pit. The PV OLYMPIC extends 20' beyond the box. Our PV ELITE pits also feature a "Y" cut out around the vault box for optimum safety and efficiency and a double strap system to hold the units snug and tight together.

**Ask About Special Prices On PV Elite 2022!**



PV ELITE 2022
Overall Size 20' x 22'6" x 32"
3 Base Units 6'8" x 13' x 30"
2 Front Units 8'3" x 5'6" x 30" sloped to 12"
2 Front Extensions 8'6" x 4' x 12"
1 Top Foam Pad 19'6" x 22' x 2"
WEATHER COVER

PV ELITE 2225
Overall Size 22' x 25' x 32"
4 Base Units 5'6" x 13' x 30"
2 Front Units 8'3" x 5'6" x 30" sloped to 12"
2 Front Extensions 9'9" x 6'6" x 12"
1 Top Foam Pad 22' x 26' x 2"
WEATHER COVER

PV ELITE OLYMPIC
Overall Size 22' x 29' x 32"
6 Base Units 5'6" x 11' x 30"
2 Front Units 8'3" x 5'6" x 30" sloped to 12"
2 Front Extensions 9'9" x 7' x 12"
1 Top Foam Pad 22' x 29' x 2"
WEATHER COVER



# TRACK & FIELD - DISCUS CAGE

## DC-5 DISCUS CAGE

SPORTS-FAB's all new Discus Cage meets all Discus Cage requirements



Five post design, zinc-plated, heavy wall, 1½" square steel tubing, The Discus Cage is 12' high and the enclosure is approximately 21' in diameter.

Cantilevered, heavy steel net supports with large, easy-to-hook net hooks.

Heavy galvanized ground sleeves (20" long), which are permanently installed flush with the ground. Complete instructions and diagrams included.

Heavy duty, #32 nylon netting with 1¾" square mesh, heavy rope border, treated with black, weather protective coating; 12' by 55'; hangs slack and easily absorbs a stray discus.

Easily assembled or knocked down by one person in 5 to 10 minutes; net pole provided; no ladder required!

## PDC-6 SIX POLE DELUXE PORTABLE DISCUS CAGE

Easy to move pole stations with slide out handles (not shown). All steel galvanized poles with rope and pulleys for easy net assembly. Poles are held in sleeves on the stations for easy assembly or removal. Use on artificial surfaces or regular field. Nets are same as DC-5 as described above.





# TRACK & FIELD - EQUIPMENT CARTS

## HCL HURDLE CART

Heavy steel box tubing construction, Zinc Plated. This cart can easily turn in it's own radius as the center wheels are lower than the outer wheels. The HCL hurdle cart is specifically designed for "L" type hurdles and will hold up to 13 hurdles, depending on their size and make.



## HCX HURDLE CART



Heavy duty, black powder coated, steel construction. Cart is the only one on the market with six wheels. Lowered center wheels allow easy rotation within its own radius, even with a full load of 16 hurdles. Also, the six wheel design eliminates the inherent weaknesses of two wheel carts such as flexing, sagging & wheel fatigue.



Each HCX hurdle cart holds 16 hanging hurdles and then nests together to utilize storage space.



# TRACK & FIELD - EQUIPMENT CARTS

## SBC STARTING BLOCKS CART

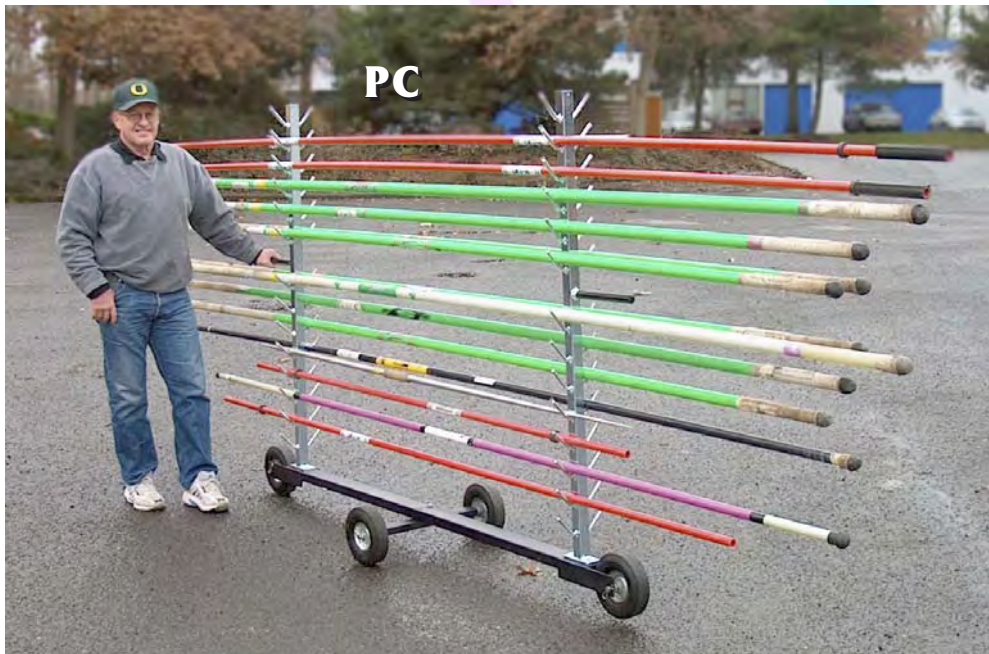
Carry and store up to 12 starting blocks in this new, heavy duty steel cart with solid rubber tires. Includes heavy duty metal tray for transporting other equipment. ZINC PLATED



## TIC TRACK IMPLEMENT CART

Carry 8 shots, 8 javelins and 8 discus out onto the field on this heavy duty cart with solid rubber tires. The discus tray is removable by use of the tray carrier handle. ZINC PLATED

## PC POLE CART



Use to store and transport vault poles, crossbars, javelins and other equipment. Holds up to 28 poles or 56 doubled up. The pegs are covered with plastic tubing, preventing damage and eliminating slipping during transport. Only five feet tall, it will fit through standard doors. Durable all steel construction; heavy duty eight inch wheels with hard rubber tires. Easy to assemble in ten minutes. Ships UPS



# TRACK & FIELD - WAGONS

## HEAVY DUTY FIELD WAGON and HEAVY DUTY PIT WAGON

This 4' x 10' Field Wagon has a load capacity of 2,000 lbs. The frame is rigidly welded steel with heavy duty dual solid rubber wheels. The steering mechanism is designed so that both front wheels turn in the direction of the handle (like a car). A small tractor can be hooked to pull from the handle. Move entire landing pits, hurdles, football dummies and other equipment. To cut costs, purchase our model without plywood and use your own local source.

TRACK & FIELD

### HFW-20008

4' x 8' without plywood

### HFW-20008P

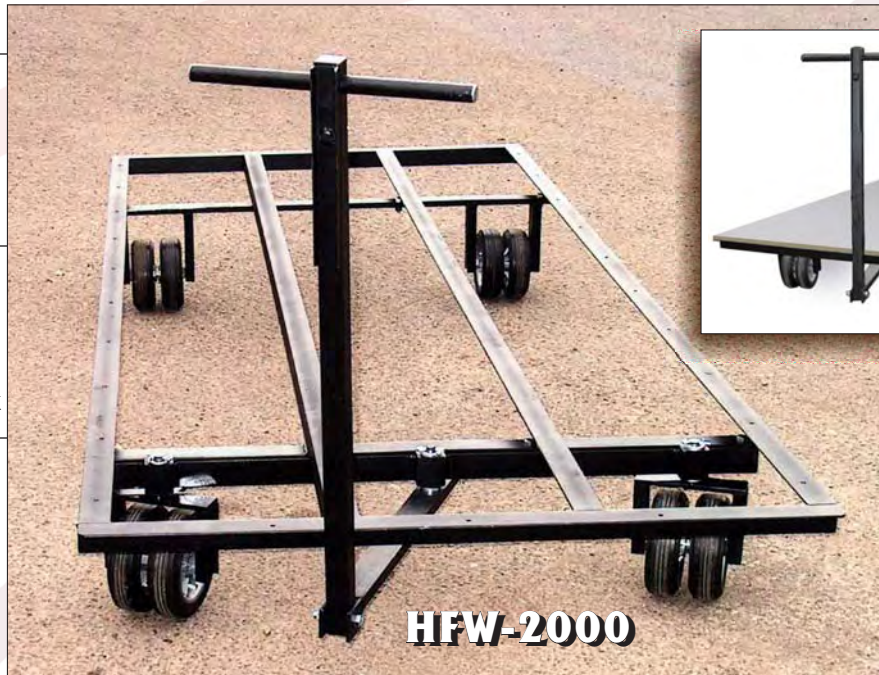
4' x 8' with plywood deck

### HFW-2000

4' x 10' without plywood

### HFW-2000P

4' x 10' with plywood deck

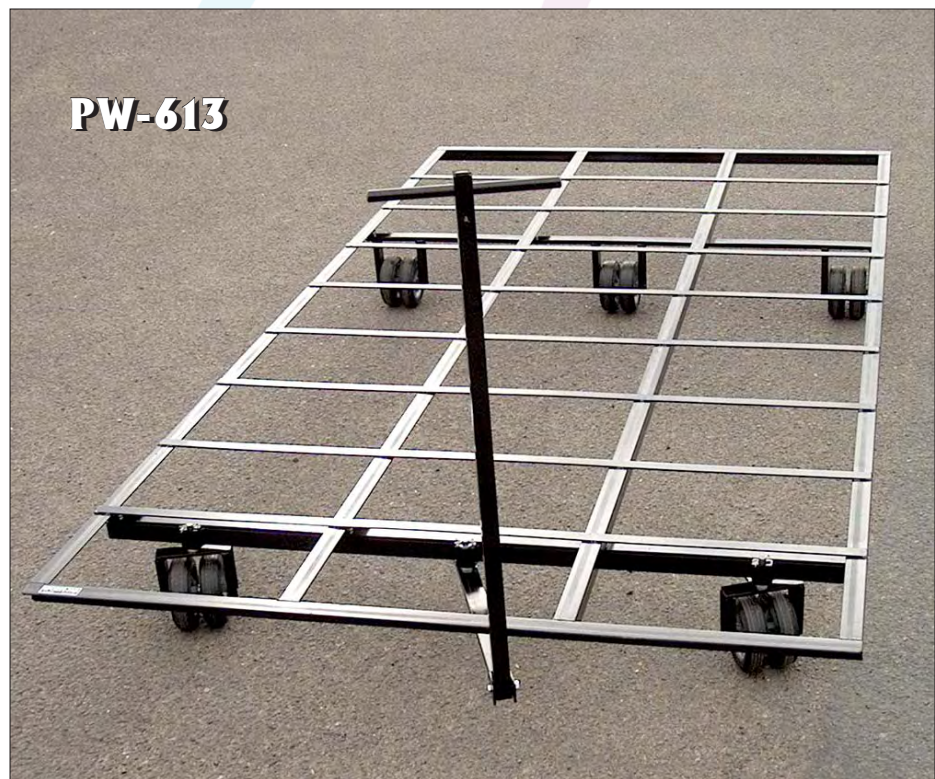


### PW-613

#### Heavy Duty Pit Wagon

6' 8" x 13' without plywood

The Pit Wagon has 6 metal cross-strips to support pits.





# TRACK & FIELD - STANDS / LAP BELL

## ST-STAND STARTER STAND

This stand is great for the starter, athletes, spectators and the timers at the finish line. Puts the starter where he or she is visible to all. Aids the starter's view of all the athletes on the starting line. Constructed of heavy steel tubing. Transport wheels for easy mobility.



**TJS-A**  
Aluminum Benches



**ST-STAND**



**TJS-W**

## TJS TIMERS' & JUDGES' STAND

Made of heavy 1½" box tubing as a fully welded unit. Lots of room for 10 people to sit or stand on the aluminum or wood benches, which are 48" wide. Full length hand rails on both sides. Heavy duty, solid rubber tires at the back make for easy moving. Each step is 14 inches deep (front to back) and the top step is 24" deep.

(ships via LTL truck - class 300)

**TJS-W** With wood benches

**TJS-A** With aluminum benches

## LPCT LAP COUNTER & BELL

Add spirit to your track meets with Sports-Fab's new rollaway final lap bell.

- All weather
- Easy to read 7" flip over numbers
- Has numbers 1 to 18
- Brass bell for signaling last lap
- Sturdy, heavy, flat steel base
- Wheels for easy transport and storage

## PIS-5 PERFORMANCE INDICATOR

NEW!! Performance Indicator Stand

- All weather
- Easy to read 7" flip over numbers
- Five digits - good for all field events
- All steel - heavy flat base with wheels for easy transport
- Easy storage
- Affordable





# TRACK & FIELD - LANE GATE/IMPLEMENTS

## LGB TRACK & FIELD LANE GATE

Steel lane gate which direct runners, joggers, and walkers to use lanes four through eight. With many new and resurfaced tracks these are a must to help preserve the heavily used inside three lanes.

Each gate is set into a sleeve placed in cement on the inside of lane one. The outer edge of the gate has a foot with rubber pads on the bottom to protect the track surface.

The Track and Field Lane Gate swings or rotates on the inside post when necessary or can be locked in place with a pin.

The gates are easy to displace and store when other uses of the field are in progress.



Supplier of all track & field implement and tapes (call for discounted prices)

## TRACK & FIELD IMPLEMENTS





# TRACK & FIELD - VIDEO TIMING SYSTEM

## Pyro Bright Flash Video Timing System

The  
**PYRO BRIGHT FLASH**  
Video Timing System  
meets ALL requirements  
for Fully Automatic Timing  
as specified by the NCAA,  
USATF and IAAF

TRACK & FIELD

This is the world's finest Track Timing System. It was developed, tested and refined over the past several years at Florida State University. All timing and judging functions can be easily accomplished by one person. No need to spend \$7,000 or more for more complicated, less reliable timing systems.

Fully automatic timing is now within the reach of every university, college, high school and track club in the country. By word of mouth only, it is in use at more than 1,500 schools and clubs in the U.S., Canada, Mexico, Bahamas, Iceland, Germany and other countries.

A camcorder, located at the finish line, photographs each runner as they cross. Time information is added to the picture while it is simultaneously recorded on a VCR. At the end of each race, the tape is played back while the times and places for all the runner in the race are read out. This can be done in less than a minute and the system is ready for the next race. The Timing Interface is aimed at the starter's pistol and started automatically by the flash of the PYRO BRIGHT FLASH starter's cartridges.

All timing operations can be performed in the press box or other suitable area. No timers, judges, or scaffolding are needed to clutter up the finish line area.



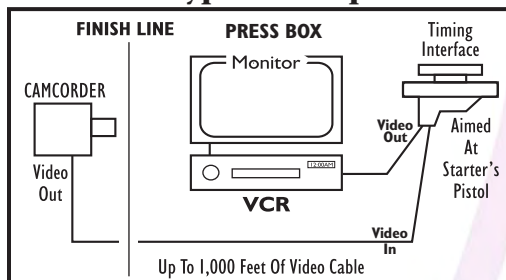
### Zoom In For Distance Races



### Wide Angle For Sprints



### Typical Setup



### SPORTS-FAB ALSO SUPPLIES

- RG59 VIDEO CABLE  
(sold by the foot)
- PYRO BRIGHT FLASH SHELLS
- .32 H&R STARTER'S PISTOLS



# TRACK & FIELD - VIDEO TIMING SYSTEM

## Automatic Timing System *Save Thousands!*



### Turn your computer into an (F.A.T.) Automatic Timing System

Eagle Eye software brings video timing into the digital age. Now in an easy to use Windows environment, fully automatic timing is a reality for every budget. Eagle Eye meets and exceeds NCAA and High School requirements for legal automatic timing (F.A.T.).

TRACK & FIELD



**Results Computer**  
with Eagle Eye and Meet Management software



Manages Results & Reads Races

**Timing Computer**  
with Eagle Eye software



Records & Reads Races



drag-n-drop connection

Digital Converter



**Video Camera**  
Aligned on the finish-line



Video Cable



**Pyro-Flash Timer**  
Triggered by the flash of the starting gun

#### System Set-Up

Use either a one or two computer configuration. Easily keep pace with most track meets with one computer – even run both Eagle Eye timing software and your meet manager software on the same computer – or for large invitationals run Eagle Eye on two networked computers (with single purchase) and give the Starter the white flag to start the next race immediately after the athletes cross the finish line.

#### Accurate

Meets and exceeds collegiate and high school requirements for fully automatic timing (F.A.T.).

#### Easy to Use

Designed for coaches, parents and volunteers - not computer people.

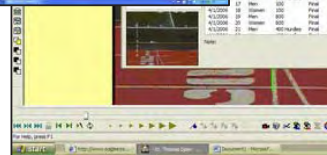
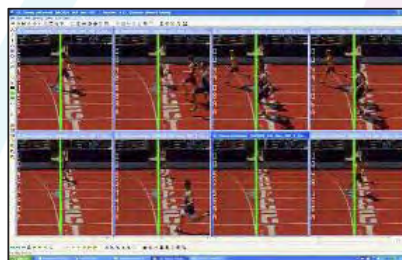
#### Affordable

F.A.T. is now affordable for all programs. No need to break the budget with line-scan systems costing thousands of dollars or hire expensive outside timing crews or hand timers.

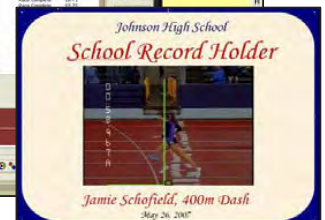
#### Compatible

Customized for efficiency and ease of use, Eagle Eye Timing software is completely compatible with RaceberryJam, Track Mate and Hy-Tek Meet Manager - our unique networking cable easily allows both the Eagle Eye and the results computer to work seamlessly together. (Hy-Tek requires PhotoInterface option).

(Create optical photo results and proof of performance documents)



(Customized directory for easy recall)



(Create photo awards)

#### Specialized Features

- Customized Race Directory for easy recall
- Magnify feature for close finishes
- Create Photo Results to match athlete with time
- Create Proof of Performance documents
- Capture finish line image for team Awards
- Sell photographs as team fundraiser
- Email finish line video to challenging coaches
- Eagle Eye Timing software is a complete motion analysis tool.

#### REQUIRED EQUIPMENT

1. Eagle Eye Software
2. Computer (PC with a minimum of 1gig RAM, 40gig free hard drive space.
3. Firewire Input
4. Video Camera (digital or standard VHS analog video camera w/RCA or A/V output if digital Hi8 or MiniDV)
5. Pyro-Bright Flash Timer
6. Pyro-Flash shells for the starting gun
7. Digital converter
8. Video cable (connecting camera to the converter)
9. Specialized file transfer cable (required only if using two computer)





# BLEACHERS / BENCHES

## PORTABLE MODELS

**BLEACHERS:** 3 Row - Does not require safety rails  
4 and 5 Row - Require safety rails

**BENCHES:** Team benches, with or without backs  
Available Lengths: 7½' 15' 21'

CALL FOR PRICES ON THESE ITEMS

Code	# Rows	# Seats	L x H x D	Wt
1955xxxx	3	30	15' x 33" x 49"	210
1956xxxx	3	42	21' x 33" x 49"	295
1957xxxx	3	54	27' x 33" x 49"	395
1992xxxx	4 (w/rails)	40	15' x 41" x 73"	300
1993xxxx	4 (w/rails)	56	21' x 41" x 73"	387
1994xxxx	4 (w/rails)	72	27' x 41" x 73"	500
1958xxxx	5 (w/rails)	50	15' x 49" x 97"	365
1959xxxx	5 (w/rails)	70	21' x 49" x 97"	505
1961xxxx	5 (w/rails)	90	27' x 49" x 97"	650

## BLEACHERS

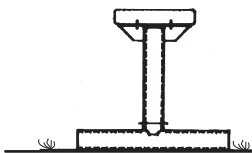


*Excellent Prices!*

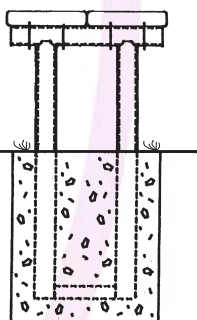
BLEACHERS

## BENCHES

Freestanding



Concrete Mount



**Many Options Available  
Please Call For Quotes**

Up To 1,000 Feet Of Video Cable





# SOCCER - PORTABLE OFFICIAL SOCCER GOAL

## PORTABLE OFFICIAL SOCCER GOAL

SOCCER



8' high x 24' wide x 4' roof x 10' back

### **SPORTS-FAB's all new Portable Soccer Goal is very possibly the Best Soccer Goal you can buy!**

- Heavy, all welded, steel box tubing construction: angle braced for extra strength and rigidity.
- Side panels and back bars are **galvanized** steel tubing for best rust protection.
- Strong 4" x 2" cross-bar and uprights are powder coated or painted with white hard finish equipment enamel.
- Safe - heavy weighted back bar with spike holders. Spikes are furnished with goals.
- **NEW** - wide (3/4") welded net fasteners are safe and easy to use. No tapes or ties are necessary. Net fasteners are located on sides and back of frame members for extra safety.
- Easy to move with our exclusive fold-back wheels. Wheels are permanently attached.
- Goals are heavy and solid enough to be placed permanently, yet easy to move for ground maintenance.
- **SPORTS-FAB** portable goals available in sizes 8'x24', 7'x21', 6½'x18', 6½'x12' and 4½'x9'.
- For following pages for information on other items: fold-up goals and rebounders.
- Please call for any other reason or just to say hello!



# SOCCER - PORTABLE OFFICIAL SOCCER GOAL

## FEATURES of the PORTABLE OFFICIAL SOCCER GOAL



.. heavy duty, 4" wide steel cross bar, angle braced for strength



.. new safety net hooks, no ties or tapes needed

.. wheel in transport position, flip forward and lock with paddle pin (no need to lift the goal to activate the wheel)



.. wheel flipped back to play position, quick and easy to do





# SOCCER - GOALS/NETS, FLAGS, BALLS

## DELUXE SOCCER GOALS



- Four Goal sizes
- Heavy, steel box tubing construction
- Heavy duty, solid rubber wheels
- Wheels fold back during play
- Net hooks; safe, no tape or ties needed
- Easily assembled
- Net **not** included - order separately

### FOUR SIZES:

- 7'H x 21'W x 6½'D, with wheels
- 6½'H x 18'W x 6'D, with wheels
- 6½'H x 12'W x 6'D, with wheels
- 4½'H x 9'W x 5½'D, without wheels

PLEASE CALL FOR CUSTOM SIZES

## NETS, FLAGS & SOCCER BALLS



Sports-Fab also sells all size nets, corner flags for all surfaces, soccer balls in all three sizes and other accessories.

Please call for items and discounted prices.



# SOCCER - REBOUND TRAINERS/FOLDUP GOALS

## REBOUND SOCCER TRAINERS

- Heavy steel galvanized frames
- Heavy "T" bases with spikes
- Quick and easy assembly
- Heavy-duty nets (3mm) with rope border included

### SMALL TRAINER

- 5'H X 10'W; 42lbs  
Ships UPS

### LARGE TRAINER

- 8'H X 19'W; 85lbs  
Ships Truck



## FOLD UP SOCCER GOALS



**MICRO GOAL** - 4'H x 6'W x 4'D; 18lbs each; folds flat to 4' x 6'

**MOD GOAL** - 6'H x 8'W x 5'D; 27lbs each; folds flat to 6' x 8'

- Nets included
- Ground spikes included
- Very strong and durable
- Heavy wall, 1¼" galvanized tubing
- Folds flat for easy storage and transport
- Quick and easy set up, less than a minute
- Ships UPS

**PLEASE CALL ABOUT CUSTOM SIZED GOALS**

Toll-Free (800) 342-6350 Fax (503) 408-0920



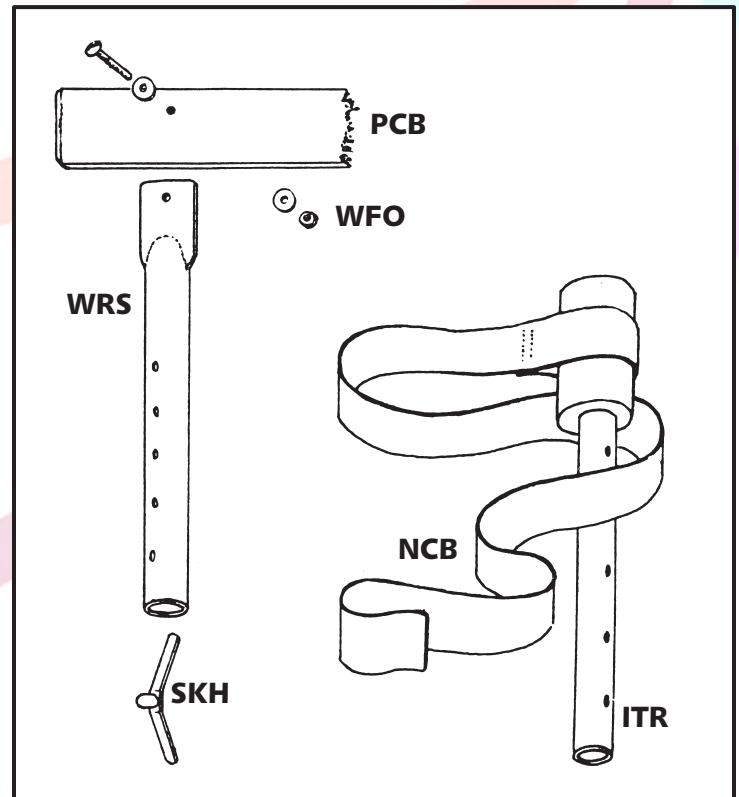
# REPLACEMENT PARTS - TRACK & FIELD

Check your equipment well in advance of each season. Tighten all nuts and bolts and replace any parts that are lost or damaged.

Please call us if you have any questions.

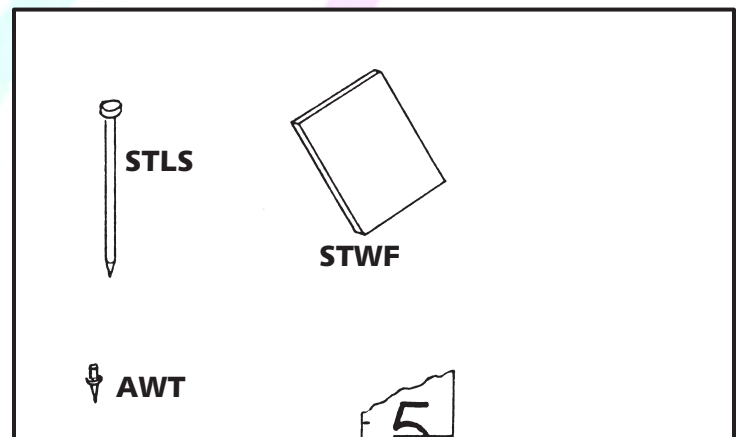
## HURDLES

PCB	41" PVC crossbar
PCB-J	36" PVC crossbar (JH-4 only)
WFO	Crossbar fasteners
SKH	Spring locks
WRS	Sr. Riser, 24"
JRS	Jr. Riser, 17"
TCK-S	Sr. Nylon crossbar w/round end risers
TCK-J	Jr. Nylon crossbar w/round end risers
ITR-S	Sr. Training riser, 24"
ITR-J	Jr. Training riser, 17"
NCB-S	Sr. Nylon "fly-off" crossbar
NCB-J	Jr. Fly-off crossbar



## STARTING BLOCKS

ST-WF	Rubber Faceplate 5 <sup>3</sup> / <sub>4</sub> " x 5" (for ST14-W, EB-90)
ST-LS	Large spikes, 3/8" x 8" long (for all blocks w/cinder track)
AWT-HB	All weather track spikes w/nuts set of 8: (for EB-90, HB-78, ST14-W)



## STANDARDS

J6-CS	Crossbar support and wing bolt		
VSB	Metal brake for adjustable base		
SHS	Height scale, self-adhesive, 2 foot increments		
0'0" - 2'0"	6'1" - 8'0"	12'1" - 14'0"	
2'1" - 4'0"	8'1" - 10'0"	14'1" - 16'0"	
4'1" - 6'0"	10'1" - 12'0"	16'1" - 18'0"	

